

Prototype

Interactive tools

MIL comes with a set of interactive tools to help assess application feasibility and create a prototype. These interactive tools also further enhance the productivity of application developers.

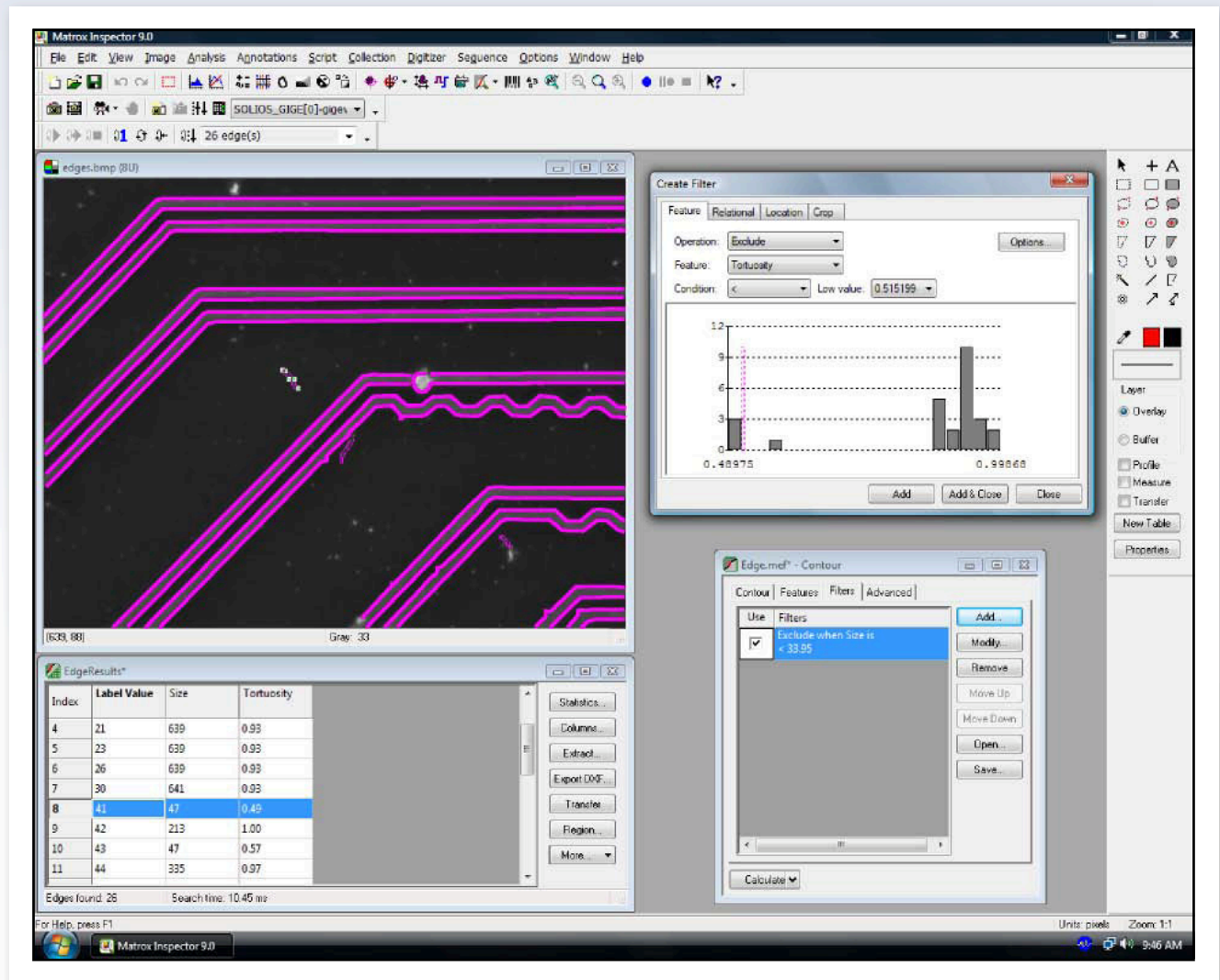
Matrox Inspector

Bundled with MIL is Matrox Inspector, an integrated imaging environment for 32-bit Windows®. Matrox Inspector provides an easy-to-use interface with point-and-click access to MIL image capture, processing, analysis, and archiving operations.

In addition to displaying images, Matrox Inspector presents processing and analysis results as tables and/or graphs, including trend and distribution, which are useful for tuning operation settings. Results can be shared with other Windows®

applications, such as Microsoft® Excel®, for further analysis and reporting. The application also gives users with the ability to benchmark operations for accuracy and repeatability. In addition to making annotations, users can draw into images to perform measurements as well as touch-up and manually segment images. Matrox Inspector works with individual images or timed sequences of images stored in MIL-supported formats as well as DICOM.

Matrox Inspector also incorporates a rich scripting environment. MIL developers can record a sequence of manual operations in a script and easily apply it to a series of images. Scripts can be created in Microsoft® Visual Basic® for Applications (VBA) or 'C'-like programming languages. Users can troubleshoot scripts using an integrated debugger.



Matrox Inspector integrated imaging environment.